

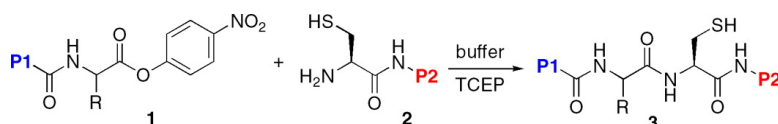
Communication

**Oxo-ester Mediated Native Chemical Ligation: Concept and Applications**

Qian Wan, Jin Chen, Yu Yuan, and Samuel J. Danishefsky

*J. Am. Chem. Soc.*, **2008**, 130 (47), 15814-15816 • DOI: 10.1021/ja804993y • Publication Date (Web): 15 October 2008

Downloaded from <http://pubs.acs.org> on February 8, 2009



**More About This Article**

Additional resources and features associated with this article are available within the HTML version:

- Supporting Information
- Access to high resolution figures
- Links to articles and content related to this article
- Copyright permission to reproduce figures and/or text from this article

[View the Full Text HTML](#)

## Oxo-ester Mediated Native Chemical Ligation: Concept and Applications

Qian Wan,<sup>†</sup> Jin Chen,<sup>†</sup> Yu Yuan,<sup>†</sup> and Samuel J. Danishefsky<sup>\*,†,‡</sup>

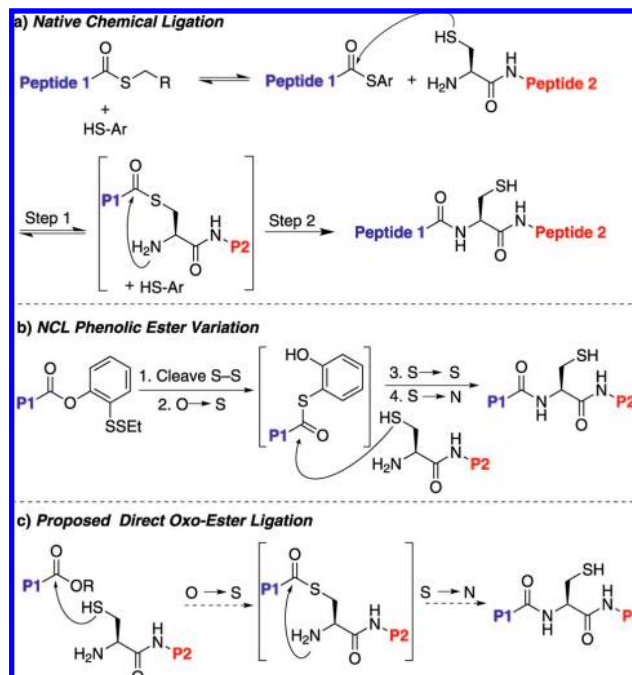
Laboratory for Bioorganic Chemistry, Sloan-Kettering Institute for Cancer Research, 1275 York Avenue, New York, New York 10065, and Department of Chemistry, Columbia University, Havemeyer Hall, 3000 Broadway, New York, New York 10027

Received June 30, 2008; E-mail: s-danishefsky@ski.mskcc.org

The landmark disclosure, in 1901, of the synthesis of the dipeptide glycylglycine through hydrolysis of glycine is considered to mark the beginning of the field of peptide synthetic chemistry.<sup>1</sup> The past 100 years have seen major advances in the development of enabling peptide assembly techniques. Complex proteins are now viewed to be viable targets for total synthesis. Perhaps the most innovative and central of the advances, from a technical standpoint, was the introduction of solid phase peptide synthesis (SPPS) by Merrifield, in 1963.<sup>2</sup> Currently, automated SPPS is commonly employed for the assembly of large, homogeneous peptide fragments. Despite the significant gains made in SPPS methodology, practical issues remain, as the technique is generally limited to peptide chains incorporating fewer than ca. 50 amino acids. In 1994, another major breakthrough in the field was made with the disclosure by Kent and co-workers of a general technique, termed native chemical ligation (NCL), which enables the coupling of large peptidic fragments.<sup>3</sup> This method, outlined in Scheme 1a, is based on the principles employed in a 1953 disclosure of Wieland and co-workers.<sup>4</sup> As shown, the C-terminus of one fragment (Peptide 1) is equipped with a thioester. The coupling partner (Peptide 2) possesses an N-terminal cysteine residue. The rate limiting phase of the sequence is widely accepted to be the intermolecular transthioesterification (step 1), which generates a unimolecular intermediate that is well-positioned to undergo intramolecular S→N acyl transfer, generating the coupled peptide fragment.<sup>5</sup>

Our laboratory has been interested in developing novel and reliable methods for the assembly of complex glycopeptides and glycoproteins bearing multiple carbohydrate domains. Part of this focus stems from our intensive program directed toward the de novo total synthesis of the glycoprotein, erythropoietin alpha (EPO) as a homogeneous entity (Figure 1). EPO, a 166-residue glycoprotein bearing four different carbohydrate domains (three of which are N-linked, and one of which is O-linked), is a medically important agent that is commonly used in the treatment of anemia.<sup>6</sup> It is well understood that the carbohydrate domains play a crucial role in conferring efficacy and stability to the glycoprotein. However, rigorous comparisons of the efficacy of various EPO glycoforms have been largely hindered by difficulties associated with isolating homogeneous EPO from natural sources. A de novo synthesis program could well provide access to valuable homogeneous material for comparative investigations. Our EPO total synthesis program has served to stimulate ongoing efforts to develop enabling advances in peptide elongation and ligation techniques.

### Scheme 1



It was in this context that our laboratory developed, in 2004, a novel and broadly useful NCL variant, which allows for the merger of glycopeptide fragments through the use of a relatively inert C-terminal ortho-thiophenolic ester (Scheme 1b).<sup>7</sup> Upon cleavage of the S–S bond, the thiophenolic ester apparently undergoes intramolecular O→S transfer, as shown. The intermediate thioester is then trapped intermolecularly by an N-terminal cysteine residue of the peptide or glycopeptide coupling partner. Finally, S→N acyl transfer provides the final coupled peptide.

Although cysteine-based NCL is a powerful method, it too suffers from a number of limitations. First, cysteine residues are found

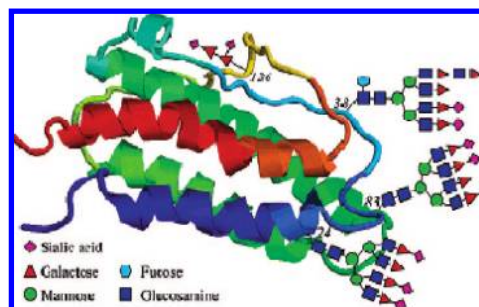
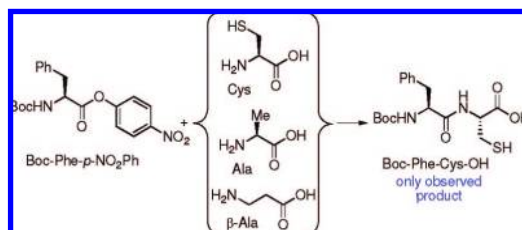
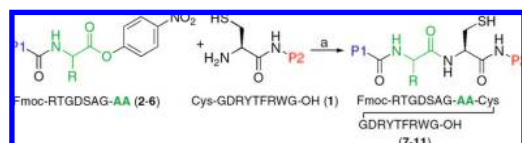


Figure 1. Structure of erythropoietin alpha (EPO).

<sup>†</sup> Sloan-Kettering Institute for Cancer Research.

<sup>‡</sup> Columbia University.

Scheme 2

Table 1<sup>a</sup>

entry	C-terminal AA	time (h)	yield
1	Thr (2)	2	79% (7)
2	Val (3)	6	69% (8)
3	Ile (4)	7	70% (9)
4	D- <i>allo</i> -Ile (5)	6	60% (10)
5	Pro (6)	15	50% (11)

<sup>a</sup> Reagents and conditions: (a) buffer at pH = 6.3–6.5 (6.0 M Gn·HCl, 188.8 mM Na<sub>2</sub>HPO<sub>4</sub>, 7.2 mM *p*-NO<sub>2</sub>PhOH), TCEP, room temp.

relatively infrequently in naturally occurring peptides and proteins. There have been attempts to circumvent this issue through various approaches, including the development of homocysteine<sup>8</sup> and seleno-cysteine<sup>9</sup> ligation protocols, through postligation desulfurization techniques,<sup>10</sup> and through the use of cysteine-free auxiliaries which may be cleaved following ligation.<sup>11</sup>

A second type of issue arises from the limitations imposed by the C-terminal amino acid residue of the thioester coupling fragment. Dawson and co-workers have demonstrated that the rate of ligation is strongly dependent on the identity of the C-terminal amino acid.<sup>12</sup> Ligations at sterically hindered,  $\beta$ -branched C-terminal sites, such as Pro, Val, Ile, and Thr, are prohibitively slow. Even in the wake of NCL, the development of efficient and reliable methods for achieving hindered peptide ligations remains an immense practical challenge.

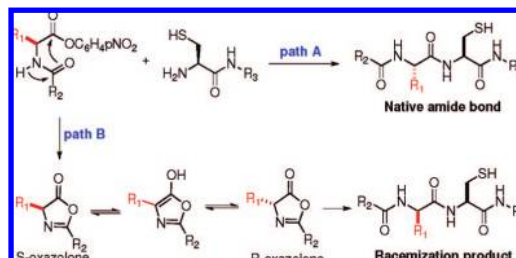
Since the rate-limiting S→S acyl transfer (Scheme 1a, step 1) appears to be highly dependent on the steric bulk of the C-terminal amino acid, we pursued the possibility of developing a modified ligation method that would proceed *directly* from an oxo-ester C-terminal peptide, without the intermediacy of the problematic thioester (see Scheme 1c).<sup>13</sup> In this regard, we took note of a 1955 disclosure by Bodanszky and co-workers on the synthesis of small peptides through aminolysis of para nitrophenyl esters.<sup>14</sup> Such esters are sufficiently activated to facilitate direct peptide coupling.<sup>15,16</sup> However, a number of issues had limited the general applicability of the method, including (1) the relative instability of the C-terminal nitrophenyl ester, (2) the potential for racemization of the C-terminal amino acid residue, and (3) the lack of strong selectivity for the  $\alpha$ -amino group versus the  $\epsilon$ -amino group of Lys. These issues would clearly need to be overcome in the development of a broadly useful direct oxo-ester ligation method.

Activated esters, such as para nitrophenyl ester, are known to be strong acyl donors. We first evaluated the selectivity of the activated ester for the cysteine functionality through a simple competition experiment. Thus, as outlined in Scheme 2, Boc-Phe-*p*-NO<sub>2</sub>Ph was added to a solution containing equal parts Cys, Ala,

Scheme 3.<sup>a</sup>

<sup>a</sup> Reagents and Conditions: buffer at pH = 6.3–6.5 (6.0 M Gn·HCl, 188.8 mM Na<sub>2</sub>HPO<sub>4</sub>, 18.8 mM TCEP·HCl), PhSH, TCEP, 30 °C.

Scheme 4



and  $\beta$ -Ala. Dipeptide Boc-Phe-Cys-OH was the only observed product, thus strongly suggesting that prior thiol capture of Cys predominates under these conditions.

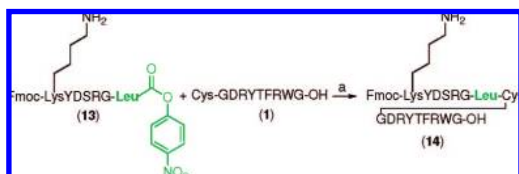
In our initial studies, we investigated NCL at less hindered C-termini. However, though ligated products could be isolated, undesired hydrolysis of the acyl donor was found to be a major competing factor, even at lower pH ranges (data not shown). We speculated that ester hydrolysis would be less problematic in peptides with more hindered C-terminal amino acids. To maximally suppress hydrolysis, *p*-NO<sub>2</sub>-phenol was added to guanidine buffer. Ligation studies were conducted in a buffered solution at pH 6.3–6.5, at 25–30 °C. As outlined in Table 1, under these conditions, oxo-ester mediated ligation proceeded smoothly with a variety of hindered C-terminal amino acid residues, including Thr, Val, Ile, D-*allo*-Ile, and Pro (entries 1–5). In each case, the reaction times were relatively short and the yields were generally quite good.

For comparative purposes, the efficiency of a traditional thioester-mediated NCL was also examined (Scheme 3). While the analogous nitrophenyl ester ligation proceeded in 7 h to afford **9** in 70% yield (entry 3), the thioester ligation took 72 h to generate **9** in only 58% yield. It is known that such prolonged reaction times can lead to the formation of undesired side products.

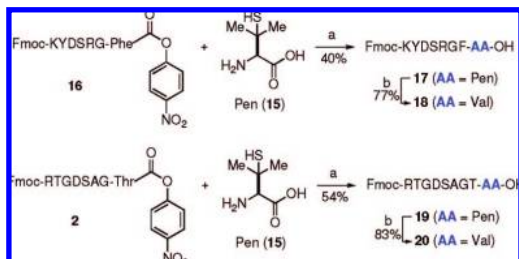
“Racemization” of the C-terminal amino acid residue is known to be an issue in peptide coupling.<sup>17</sup> Presumably, racemization proceeds through the pathway outlined in Scheme 4. An analysis of the extent of racemization in the peptides presented in Table 1 revealed less than 5–6% racemization at the C-terminal Leu, Ile, and Val sites.<sup>18</sup>

Because of the high reactivity of the *p*-nitrophenolic ester, it is conceivable that resident free lysine residues could be prone to undergo competitive direct aminolysis with the ester to provide undesired cyclic peptide adducts. To evaluate the selectivity of the ligation protocol described above for the  $\alpha$ -amino group over the lysine  $\epsilon$ -amine, we synthesized peptide **13**, which incorporates an unprotected Lys residue on the fragment bearing the C-terminal nitrophenyl ester (Scheme 5). In the event, we were pleased to find that ligation with **1** readily afforded coupled product, **14**, in 61% yield. Only a small amount of the undesired cyclic peptide was observed under our conditions.

Finally, in an effort to probe the limits of our system in a discerning way, we sought to investigate couplings of C-terminal nitrophenyl ester peptides with the very hindered unnatural amino acid penicillamine (Pen, **15**).<sup>19</sup> This commercially available amino

Scheme 5<sup>a</sup>

<sup>a</sup> Reagents and conditions: buffer at pH = 6.3–6.5 (6.0 M Gn·HCl, 188.8 mM Na<sub>2</sub>HPO<sub>4</sub>, 7.2 mM *p*-NO<sub>2</sub>PhOH), TCEP, room temp, 1 h, 61% isolated yield.

Scheme 6<sup>a</sup>

<sup>a</sup> Key: (a) buffer at pH = 6.3–6.5 (6.0 M Gn·HCl, 188.8 mM Na<sub>2</sub>HPO<sub>4</sub>, 7.2 mM *p*-NO<sub>2</sub>PhOH), TCEP, 30 °C, 2–3 h; (b) buffer at pH = 6.3–6.5 (6.0 M Gn·HCl, 188.8 mM Na<sub>2</sub>HPO<sub>4</sub>, 18.8 mM TCEP·HCl), TCEP, VA-044, 37 °C, 2–3 h.

acid, which may serve as a surrogate for Val, can provide a viable alternative to Cys in cases where ligation at a Cys site is not practical. In the event, we were pleased to observe that both peptides **16** and **2** readily underwent ligation with Pen (**15**) to afford the corresponding peptides in acceptable yields (Scheme 6). Exposure to thiol reduction conditions then served to efficiently transform Pen to Val. A comparative coupling reaction was performed on the corresponding thioester (Fmoc-RTGDSAG-Thr-SPh). After 24 h, only 4% of compound **19** was generated, based on LC–MS integration.

In conclusion, we have described a major simplification in the field of native chemical ligation. Hitherto, the success of this method had been assumed to be dependent on the formation of a thioester acyl donor. Through proper balancing of acyl donor potential with substrate stability, we have demonstrated the feasibility of NCL with oxo- rather than thioesters. Further applications of this method, as well as this extended logic, to targets of major biological interest will be described in due course.

**Acknowledgement.** Support for this research was provided by the National Institutes of Health (CA28824). A postdoctoral fellowship is gratefully acknowledged by Q.W. (Mr. William H. Goodwin and Mrs. Alice Goodwin and the Commonwealth Foundation for Cancer Research, and the Experimental Therapeutics Center, SKI). We thank Dr. George Sukenick, Ms. Sylvi Rusli, and Ms. Hui Fang of the Sloan-Kettering Institute's NMR core

facility for mass spectral and NMR spectroscopic analysis (SKI core grant no. CA02848). We thank Ms. Rebecca Wilson for editorial counsel.

**Note Added after ASAP Publication.** After ASAP publication on October 15, 2008, Scheme 1, Table 1, and the abstract graphic have been corrected. The revised version was reposted on October 28, 2008.

**Supporting Information Available:** Experimental procedures and compound characterization data. This material is available free of charge via the Internet at <http://pubs.acs.org>.

## References

- (1) Fischer, E.; Fourneau, E. *Ber. Dtsch. Chem. Ges.* **1901**, *34*, 2868–2879.
- (2) Merrifield, R. B. *J. Am. Chem. Soc.* **1963**, *85*, 2149–2154.
- (3) Dawson, P. E.; Muir, T. W.; Clark-Lewis, I.; Kent, S. B. H. *Science* **1994**, *266*, 776–779.
- (4) Wieland, T.; Bokelmann, E.; Bauer, L.; Lang, H. U.; Lau, H. *Justus Liebigs Ann. Chem.* **1953**, 583, 129–149.
- (5) Johnson, E. C. B.; Kent, S. B. H. *J. Am. Chem. Soc.* **2006**, *128*, 6640–6646.
- (6) Lai, P.; Everett, R.; Wang, F.; Arakawa, T.; Goldwasser, E. *J. Biol. Chem.* **1986**, *261*, 3116–3121.
- (7) (a) Warren, J. D.; Miller, J. S.; Keding, S. J.; Danishefsky, S. J. *J. Am. Chem. Soc.* **2004**, *126*, 6576–6578. (b) Chen, G.; Warren, J. D.; Chen, J.; Wu, B.; Wan, Q.; Danishefsky, S. J. *J. Am. Chem. Soc.* **2006**, *128*, 7560–7462. (c) Chen, J.; Warren, J. D.; Wu, B.; Chen, G.; Wan, Q.; Danishefsky, S. J. *Tetrahedron Lett.* **2006**, *47*, 1969–1972.
- (8) Tam, J. P.; Yu, Q. *Biopolymer* **1998**, *46*, 319–327.
- (9) Quaderer, R.; Sewing, A.; Hilvert, D. *Helv. Chim. Acta* **2001**, *84*, 1197–1025.
- (10) (a) Yan, L. Z.; Dawson, P. E. *J. Am. Chem. Soc.* **2001**, *123*, 526–533. (b) Pentelute, B. L.; Kent, S. B. H. *Org. Lett.* **2007**, *9*, 687–690. (c) Crich, D.; Banerjee, A. *J. Am. Chem. Soc.* **2007**, *129*, 10064–10065. (d) Botti, P.; Tchertchian, S. WO/2006/133962. (e) Wan, Q.; Danishefsky, S. J. *Angew. Chem., Int. Ed.* **2007**, *46*, 9248–9252.
- (11) (a) Low, D. W.; Hill, M. G.; Carrasco, M. R.; Kent, S. B. H. *Proc. Natl. Acad. Sci. U.S.A.* **2001**, *98*, 6554–6559. (b) Wu, B.; Chen, J.; Warren, J. D.; Chen, G.; Hua, Z.; Danishefsky, S. J. *Angew. Chem., Int. Ed.* **2006**, *45*, 4416–4425. (c) Chen, G.; Wan, Q.; Tan, Z.; Kan, C.; Hua, Z.; Ranganathan, K.; Danishefsky, S. J. *Angew. Chem., Int. Ed.* **2007**, *46*, 7383–7387. (d) Payne, R. J.; Fichet, S.; Greenberg, W. A.; Wong, C.-H. *Angew. Chem., Int. Ed.* **2008**, *47*, 4411–4415. (e) Okamoto, R.; Kajihara, Y. *Angew. Chem., Int. Ed.* **2008**, *47*, 5402–5406.
- (12) (a) Hackeng, T. M.; Griffin, J. H.; Dawson, P. E. *Proc. Natl. Acad. Sci. U.S.A.* **1999**, *96*, 10068–10073. Kemp also observed similar results. (b) Kemp, D. S.; Galakatos, N. G.; Dranginis, S.; Asthon, C.; Fotouhi, N.; Curran, T. P. *J. Org. Chem.* **1986**, *51*, 3320–3324.
- (13) Oxo-esters were prepared according to the general procedures described in references 7a, , and 10e. See Supporting Information for full synthetic details.
- (14) Bodanszky, M. *Nature* **1955**, *175*, 685.
- (15) Gagnon, P.; Huang, X.; Therrien, E.; Keillor, J. W. *Tetrahedron Lett.* **2002**, *43*, 7717–7719.
- (16) Hojo, H.; Aimoto, S. *Bull. Chem. Soc. Jpn.* **1991**, *64*, 111–17.
- (17) For discussion of C-terminal amino acid racemization in thioester-mediated NCL, please see references 12a and 19a.
- (18) Goodman, M.; McGahren, W. J. *Tetrahedron* **1967**, *23*, 2031–2050.
- (19) Following submission of this communication Seitz and co-workers reported a ligation at valine, using penicillamine as the valine precursor. (a) Haase, C.; Rohde, H.; Seitz, O. *Angew. Chem., Int. Ed.* **2008**, *47*, 6807–6810. On the basis of the results of using penicillamine (**15**) as a valine surrogate, described in this communication, our group performed further research directed to a more reactive thiol-based acyl acceptor culminating in a valine equivalence, which is described in the following reference. (b) Chen, J.; Wan, Q.; Yuan, Y.; Zhu, J. L.; Danishefsky, S. J. *Angew. Chem. Int. Ed.* **2008**, Early View, DOI: 10.1002/anie.200803523.

JA804993Y